



**CAMBRIDGE**  
English

**Cambridge**

**Digital**

English Qualifications

# Frequently Asked Questions (FAQs)

Pre A1 Starters Digital  
A1 Movers Digital



## General questions about the tests



### Are the digital tests the same level of difficulty as the paper-based tests?

Yes. Both tests target children at Pre A1 and A1 levels of English using the Common European Framework of Reference.

### Can candidates bring their own device?

No, candidates cannot bring their own devices.

### Do you use British or American English in the test?

British and American English terms are included in the vocabulary lists for the tests. The Listening component contains both British and American accents, and throughout the test answers given in either standard British English or standard American English are accepted.

### Are there wordlists for Pre A1 Starters Digital and A1 Movers Digital? Are they the same as for the paper-based tests?

There are **Pre A1 Starters Digital and A1 Movers Digital wordlists** available. The wordlists are largely the same as the paper-based wordlists, but they have been reviewed and updated with some new additions, some movement from one level to another between the lists, and the removal of some words.

### What do children receive after doing the test?

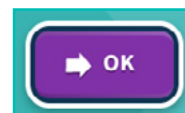
All candidates who complete Pre A1 Starters Digital and A1 Movers Digital tests will receive an online Statement of Results with personalised feedback and a printed certificate with shields. There is no pass or fail. On their certificate, candidates will see shields for Listening, Reading and Writing, and Speaking. The maximum score for each is five shields. One shield means that the child took the test but can still improve a lot in this part of the test. Five shields mean that the child did very well in this part of the test. There is information on the back of the certificate showing how the tests are aligned to the Common European Framework of Reference for Languages (CEFR) at levels Pre A1 and A1.

### How long will it take to receive the results?

Results are released in 5-10 working days. Certificates are printed and sent out as soon as the results are released. If you need to check when the certificate will arrive, contact the exam centre.

### What if a child wants to change their answer?

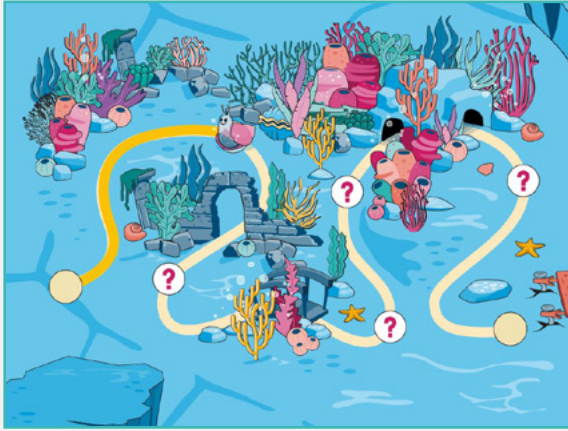
Answers, in all components, can be changed by selecting a new answer. However, once the child has clicked 'OK' their answer will be saved and then cannot be changed.



## How can learners see their progress throughout the tasks and test?

Learners can see the number of tasks in each component represented on a map. As tasks are completed, they move to the next point on the map. There is a different map for each component.

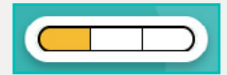
The Pre A1 Starters Digital map is an underwater world.



The A1 Movers Digital map is on a dinosaur island.



Within each task, there is a progress bar to show the number of screens within that task. Some tasks have a new screen for each question in that task, and some tasks have more than one question on each screen. As questions are answered, a part of the bar turns orange.



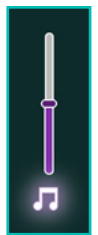
## What devices can the sample tests be taken on?

Sample tests can be taken on laptops, PCs and Chromebooks.

# Questions about the Listening component

## What if the learner wants to change the volume of the audio?

The volume is set by the child or invigilator during the test set-up at the start of the test. There will also be main volume controls on their device and there may also be another volume control on the wire of their headset. If the child would like to change the volume during the test, they can press the escape key to leave full screen. They will see the volume control.



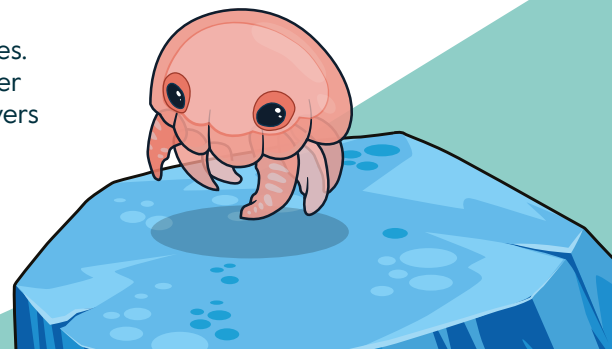
## How many times is the audio repeated?

The audio for all tasks can be listened to twice. Task 4 in Pre A1 Starters Digital and A1 Movers Digital is called 'interactive dialogue.' For this task, the audio can be repeated as many times as needed. Learners can choose when to listen again by clicking on the 'Play' button.



## How is the Listening component marked?

The questions are designed to reflect the age and level of the candidates. Responses are automarked, using high facilitation, comprehensive answer keys. This is thoroughly reviewed to ensure that all possible correct answers are included.



## Questions about the Reading and Writing component

### How do learners write their answers?

Learners can type their answers either by selecting letters from the on-screen keyboard, or by using their laptop or PC keyboard.

### How is the Reading and Writing component marked?

The questions are designed to reflect the age and level of the candidates. Responses are automarked, using high facilitation, comprehensive answer keys. This is thoroughly reviewed to ensure that all possible correct answers are included.

## Questions about the Speaking component

### Is the Speaking component new?

No. The Speaking component is the same face to face examiner-led test that all candidates will take whether they do Cambridge English Qualifications Digital or the paper-based test.

### Why is the Speaking component still face-to-face?

Young children are developing fundamental communication skills. Doing the speaking component with a Cambridge examiner gives them a real experience of engaging verbally in English. The presence of a friendly adult helps put candidates at ease, giving them the best chance of achieving their potential in the component.

### How is the Speaking component marked?

The Speaking Examiner marks the Speaking component and sends the marks to Cambridge University Press and Assessment.

